

SRDK-101D

905 Harrison Street
Suite 134
Allentown, PA 18103
Phone/Fax: 610-628-6363

4K Closed Cycle Cooler

Model	Type	2nd stage capacity 60Hz	2nd stage capacity 50Hz	1st stage capacity 60Hz	1st stage capacity 50Hz	Lowest / Highest temp.	Cool down time	Expander Weight	Compressor
SRDK-101D	4K GM	0.25W @ 4.2K	0.25W @ 4.2K	7W @ 60K	5W @ 60K	~3K / 325K	125 min. to 4.2K	7.2 kg (16 Lb)	HC-4E1 Water or air cooled

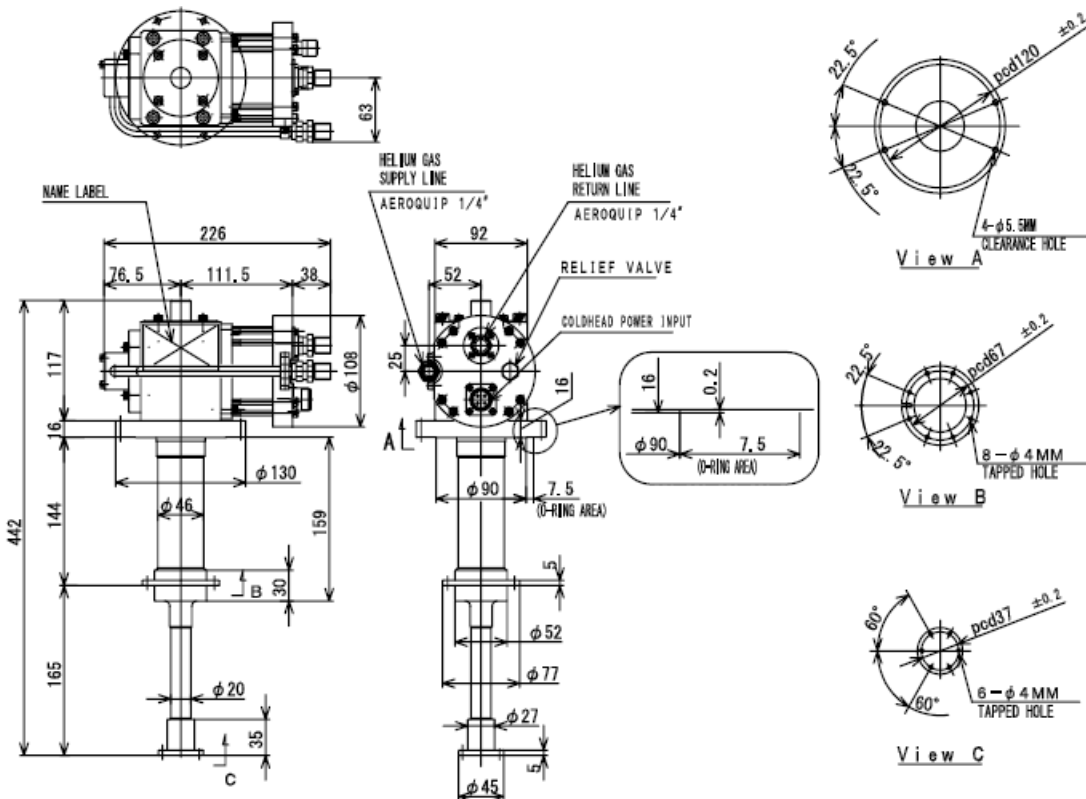
Key Competitive Parameters

The single phase, air or water cooled the 101D meets the demands of the lower temperature requirements in laboratory research.

- UL & CE certified
- One piece cylinder assembly with round warm flange
- E-beam welded & fully automated honing – straighter cylinder & higher quality cylinder finish (longer seal life)
- Expander has flanged heat station allowing better thermal contact to item being cooled

Built with ISO 9001 and 6 sigma QA processes

- All expanders 100% tested
 - Function & life run
 - Cylinder cold leak checked
 - Min. temperature then heat loads applied
 - Capacity stability measured (automated—not a person checking once in a while)
- Strong quality steps results in very low failure rate - <0.3%
- Warranty - 18 months
- Service interval – 10,000 hours

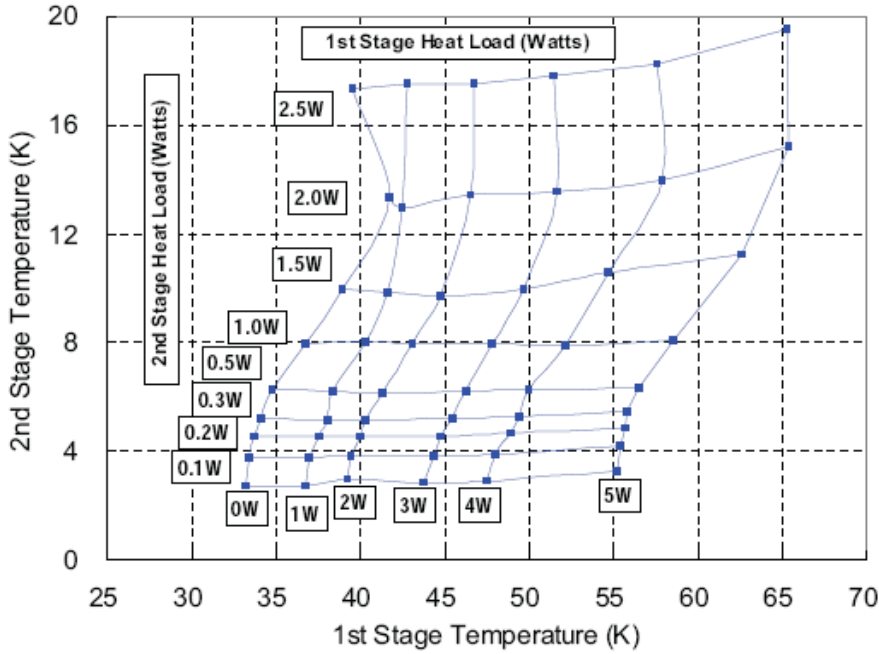


SRDK-101D

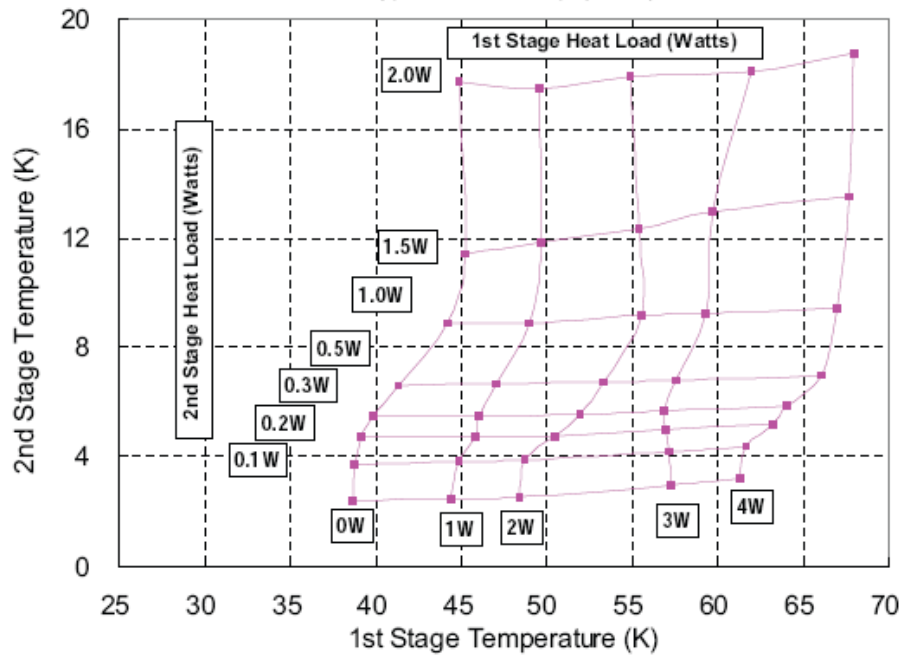
905 Harrison Street
 Suite 134
 Allentown, PA 18103
 Phone/Fax: 610-628-6363

4K Closed Cycle Cooler Heat Load Maps

RDK101D Typical Load Map (60Hz)



RDK101D Typical Load Map (50Hz)



HC-4E1 Helium Compressor

Water or Air Cooled Closed Cycle

905 Harrison Street
Suite 134
Allentown, PA 18103
Phone/Fax: 610-628-6363

Specifications	
Electrical Voltage	208/230V~(+/-5%), 60Hz 200V~(+/-5%), 50Hz 220V~(+/-5%), 50Hz (with transformer) 230/240V~(+/-5%), 50Hz (with transformer)
Power consumption	3.0kW, 15.5 amps full load at 208 V~, 60Hz 2.6kW, 13 amps full load at 200 V~, 50Hz 68 amperes locked rotor current
Ambient Temperature	4C to 40C (40F to 104F)
Cooling Water Inlet Temp.	4C to 27C (40F to 80F)
Cooling Water Flow Rate	2.7 L/min (0.7 gpm) minimum
Dimensions	504 x 439 x 485 mm 19.8 x 16.9 x 19.1 inches
Weight	75 kg (165 lbs.) 82 kg (180 lbs) (with transformer)



Key Competitive Parameters

- Warranty - 18 months
- Service interval – 30,000 hours (adsorber change)
- Worldwide service network
- Front panel access for all utilities and settings
- Built with ISO 9001 and 6 sigma QA processes
 - All compressors 100% tested
 - Compressor motor purpose built for Helium use
 - Function & life run
 - Measured yields, root cause failure, corrective action, components 100% checked, supplier performance monitored
 - Contamination control process
- Strong quality steps results in very low failure rate of <0.5%
- In production since 1980's
- Last 10 years 2500 units fielded
- Field Serviceable by user

