

SM-Series Side Mount



FEATURES:

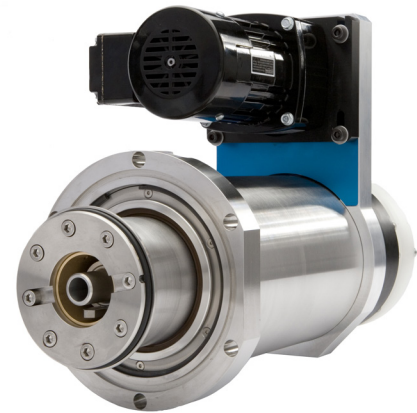
- Customized drive shaft length
- Compact and flexible form factor
- Easy access water seal cartridge
- Patented power-delivery technology
- Simple design - fewer parts and highly reliable
- Magnet bar externally adjustable to any angle
- Patented target water fill/drain feature

BENEFITS:

- Wider glass coverage than traditional end blocks
- Fits most chamber designs
- All utilities are external
- Utilities remain attached during target changeover
- High-packing density; dual cathodes in 400mm space (205mm center-to-center)
- Drive motors mount up, down, inward, or outward
- High-power with no inductive heating impact - no brush dust
- Simple, in-house maintenance
- Allows co-sputtering, tighter plasma coupling, and limits shield coating
- Keeps your coater dry during target changes, which reduces pump time and stabilizes your process much faster

NEW SYSTEM INSTALLATIONS:

- Our compact design allows chamber design flexibility and the ability to install more cathodes in your system
- Integrate with TRM-Bar™ or QRM-Bar™ magnetics and e-Cathode™ systems



Patented SM-Series Side Mount Rotary Cathode

UPGRADE PLANARS TO ROTARIES:

- Coater modification and integration support available
- Switch between planars and sidemounts in the same slot

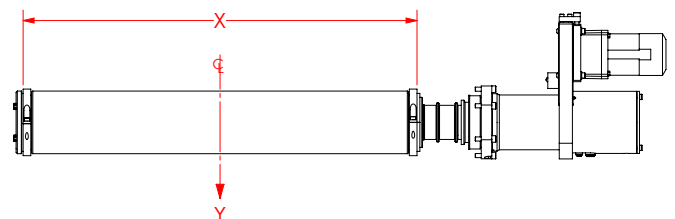
CANTILEVER CAPABILITY:

Metric: $XY/2 + 16X^2 \leq 138$

Imperial: $XY/2 + 0.9X^2 \leq 12,000$

X = Backing tube length (meters or inches)

Y = Weight of target (kg or lbs only)



Model	Power	V/A	Target (mm)
SM	Up to 200kW DC or 80 kHz MFAC	1000v/450A	Up to 4000

The SM-Series side mount rotary cathode uses the same patented technology as our SC-Series end block to deliver outstanding value, performance, and reliability in a compact package

